

Avalo/LTC Keyless Lock and Solenoid Replacement

Purpose

Instructions for replacing the keyless lock and Solenoid assembly on Avalo/LTC Capsa carts.

Tools Required

Philips head screwdriver (#1 and #2)
Flat head screwdriver
Wire cutters

Parts Required

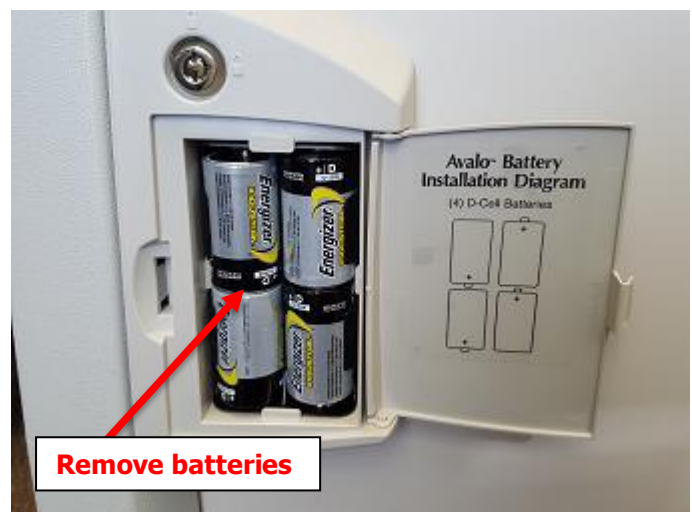
12078-01K Avalo Keyless Lock Lever Assembly
12079K Avalo Keyless Solenoid Assembly

Procedure

Start by opening the battery box compartment.



Remove the batteries from the battery box.



Use your manual override key to unlock the cart.

****Note:** If you do not have the key, you can try to re-insert the batteries (new ones if needed) to get the cart unlocked. All drawers are recommended to be unlocked for this procedure. Please obtain additional information from Capsa if drawers are still locked at this point.

Use key to unlock

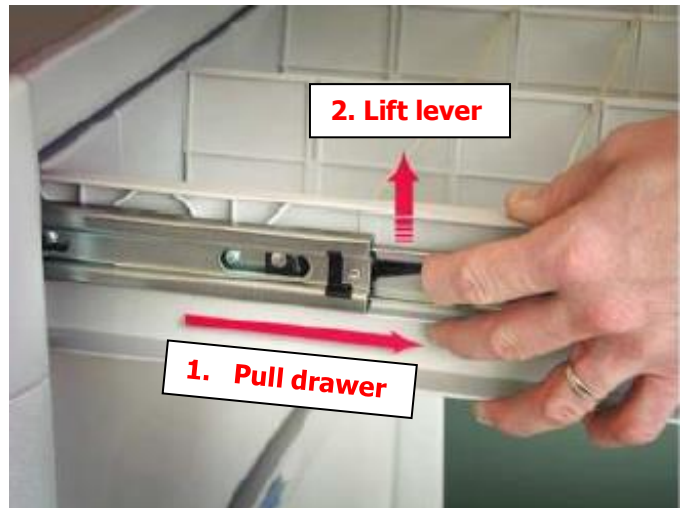


Open and remove all the drawers on the cart. The left side rail will have a plastic lever to move upwards while the right side rail has a lever to move downwards to release the drawer from the rails.

If your cart has 2 columns of drawers, you only need to remove the right column of drawers.

2. Lift lever

1. Pull drawer



Using a flat head screwdriver, pop the plastic cover to the right of the lock assembly out and set it to the side.

Do this carefully so you do not damage the cart.

Remove

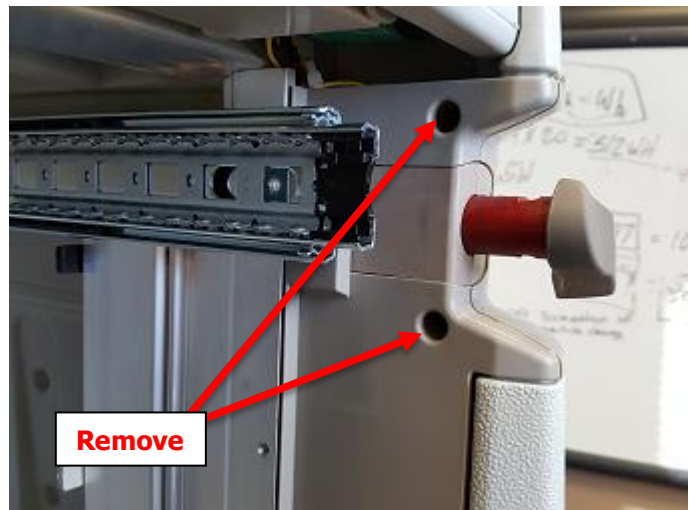


Remove the Philips screw that is under the cover you just removed.



Remove the 2 Philips screws to the left side of the lock as well. The cover to the right of the lock assembly should now be able to be removed.

**Note: The screws are not visible and in the 2 holes in the picture shown to the right.

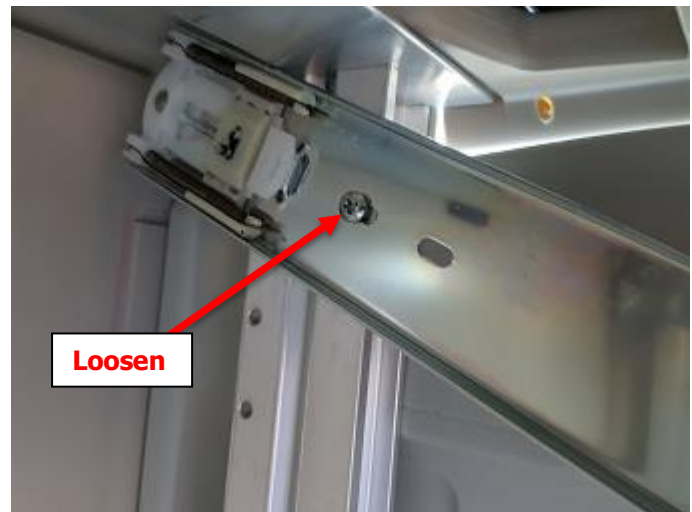


To remove the left side cover, you may have to unscrew the top rail(s) blocking the cover. Extend the rail all the way out and remove the Philips screw shown in the picture to the right.



Loosen the screw on the back part of the rail and carefully bring the front side of the rail down so it is resting on the rail under it.

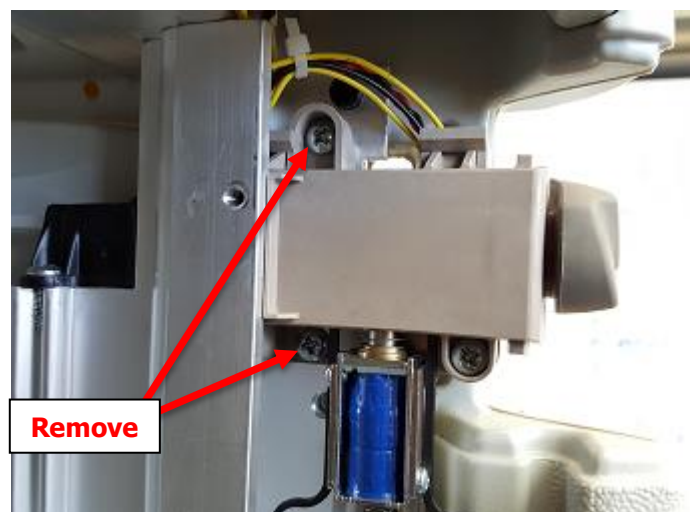
****Note:** You may have repeat this process on the rail underneath as well.



Remove the covering to the left of the keyless lock assembly. The cover to the right side of the keyless lock assembly can be removed as well.



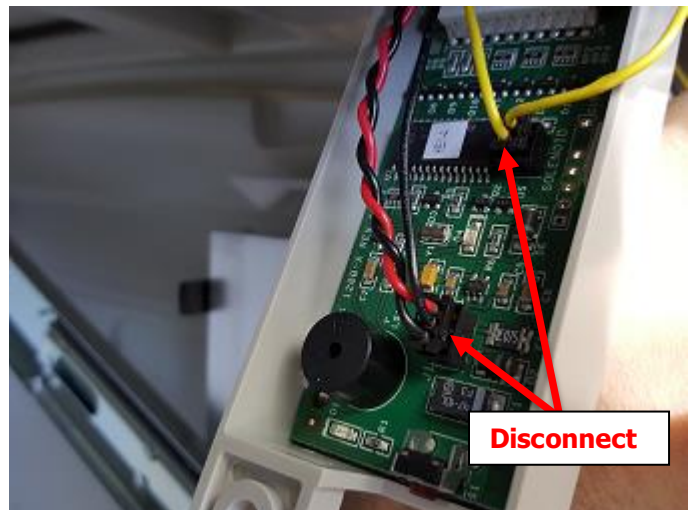
Remove the 2 Philips screws holding the lock assembly on the cart. The picture to the right shows the correct screws to remove.



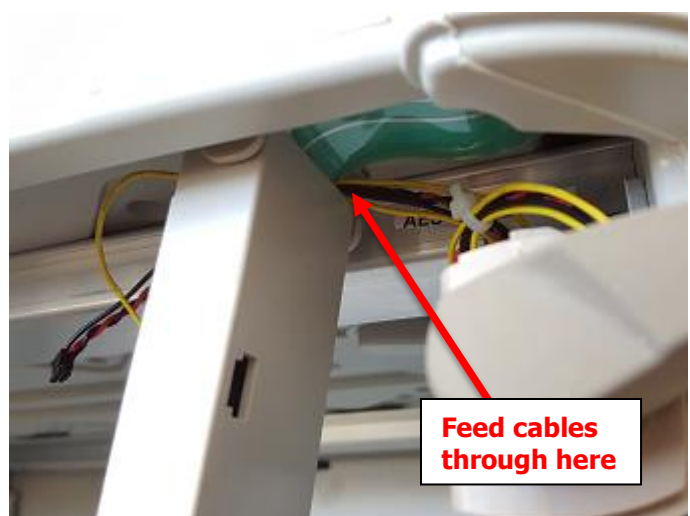
Under the keypad assembly, you will need to remove the Philips screw holding the PCB carrier up on the cart.



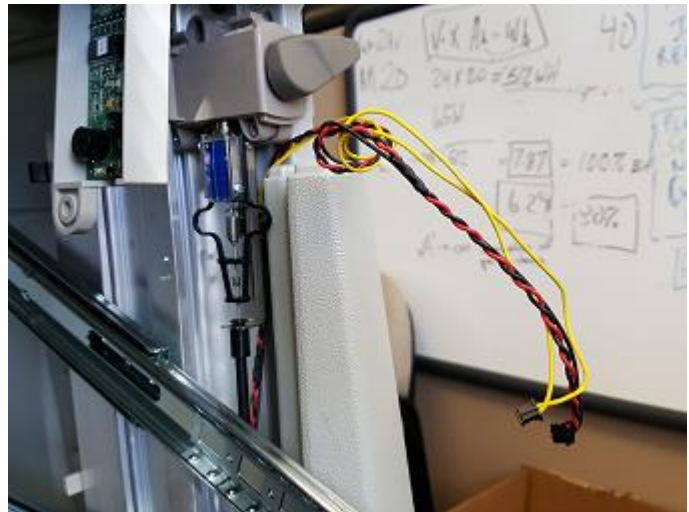
With the PCB carrier now open, disconnect the Solenoid and power connection on the PCB.



Carefully feed the 2 cables you just disconnect through the opening on the PCB carrier that is still attached to the cart so the cables are free of the carrier compartment.

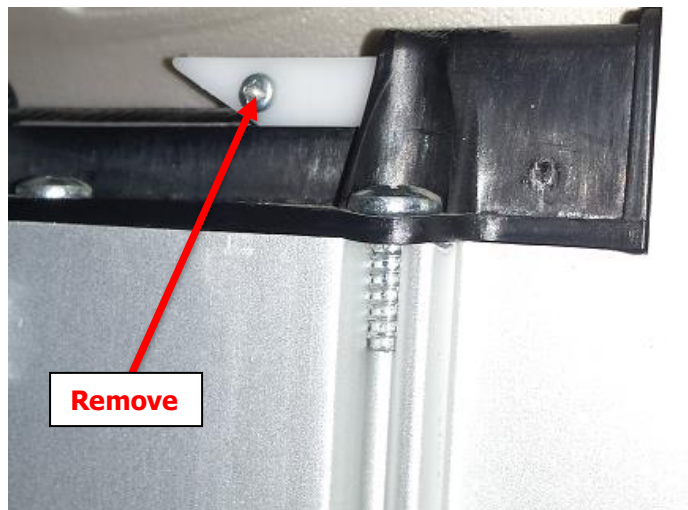


The picture to the right shows the Cables free of the PCB carrier.



If your cart has more than 1 column of drawers, you will need to remove the small screw on the back side of the lock assembly.

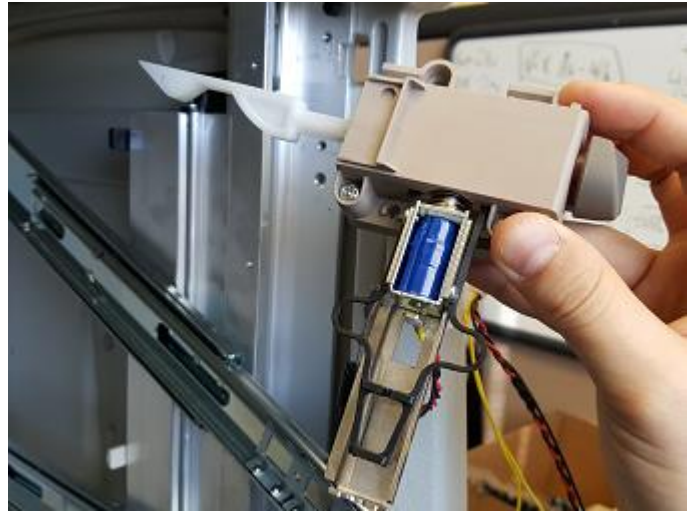
Please use a #1 size magnetic Philips head screwdriver or bit so you do not lose this screw. Without this screw, the left column of drawers on your cart will not function correctly.



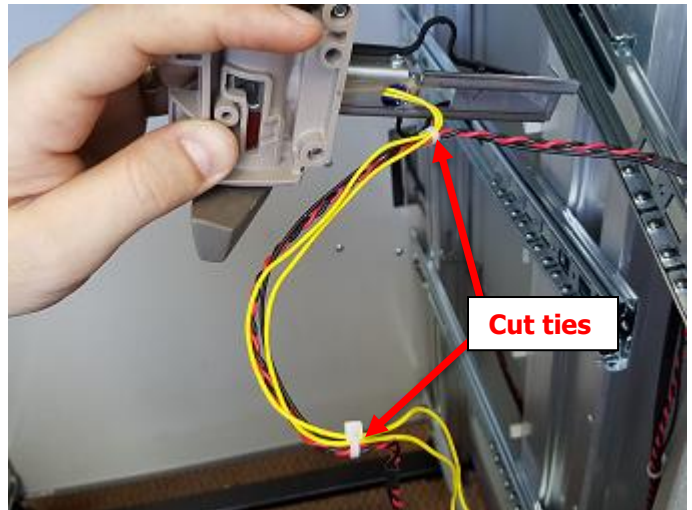
Twist the lock assembly clockwise so the bottom of the assembly goes out to the left. This will allow you to pull the lock assembly out of the cart.



Pull the lock assembly out of the cart. The picture to the right shows the lock assembly removed.



You will need to VERY carefully cut any cable ties holding the power cable and Solenoid cable together.

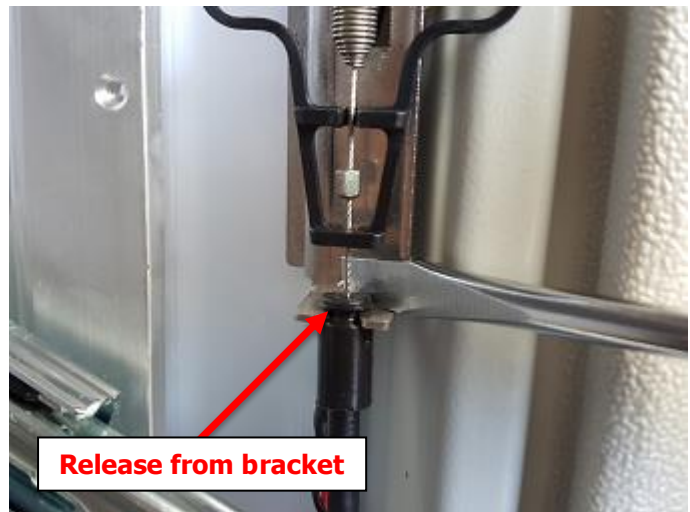


Before removing the manual unlock cable from the Solenoid assembly, take note of how it is routed. You can use the picture to the right as a reference for the cable routing.

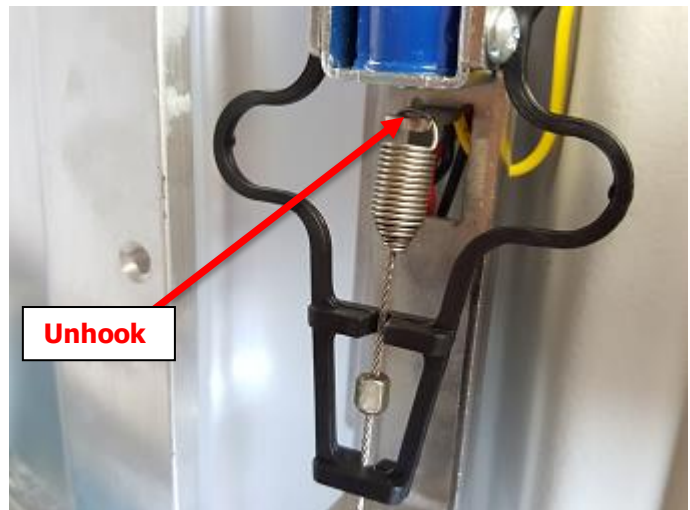


Using a Flat head screwdriver, place the head of your screwdriver against the bracket holding the lock override cable behind the cable as shown in the picture to the right.

Turn your screwdriver clockwise to release the cable from the bracket.



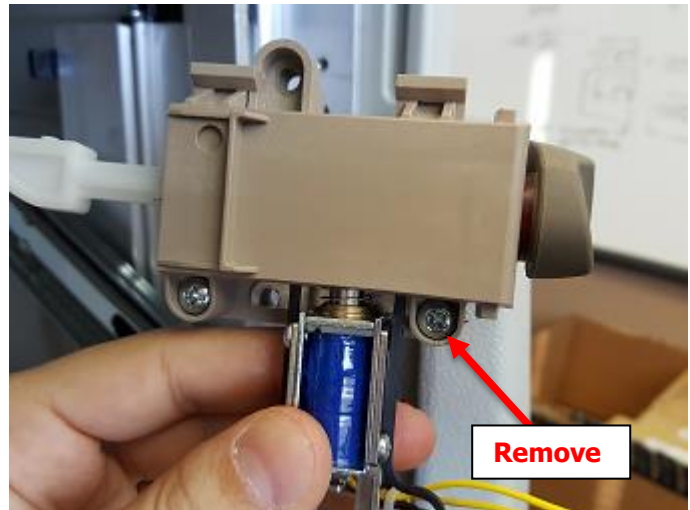
Unhook the spring on the end of the cable attach to the bracket of the Solenoid assembly.



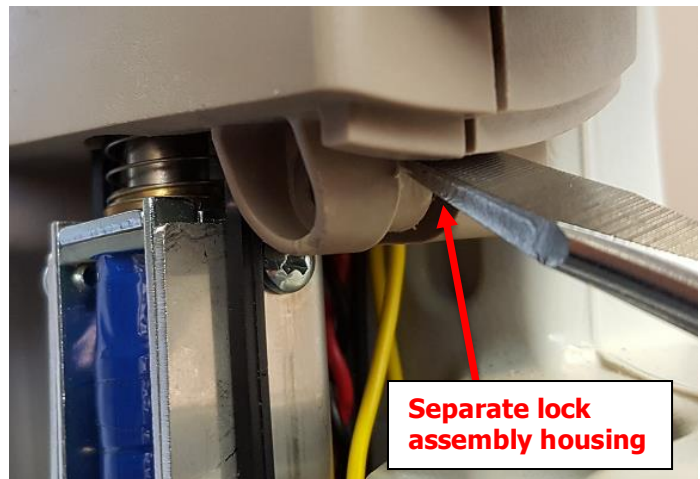
With the spring unhooked from the bracket, you should not be able to un-route and remove the cable from the Solenoid assembly. The picture to the right shows the cable removed from the assembly.



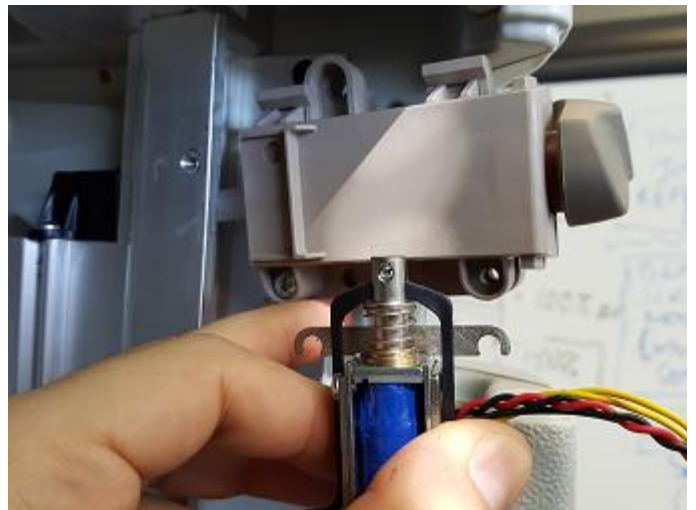
To remove the Solenoid assembly from the lock assembly, remove the screw to the right of the Solenoid assembly shown in the picture to the right.



Using a flat head screwdriver, separate the lock assembly housing so you can pull the Solenoid assembly down out of the lock assembly.

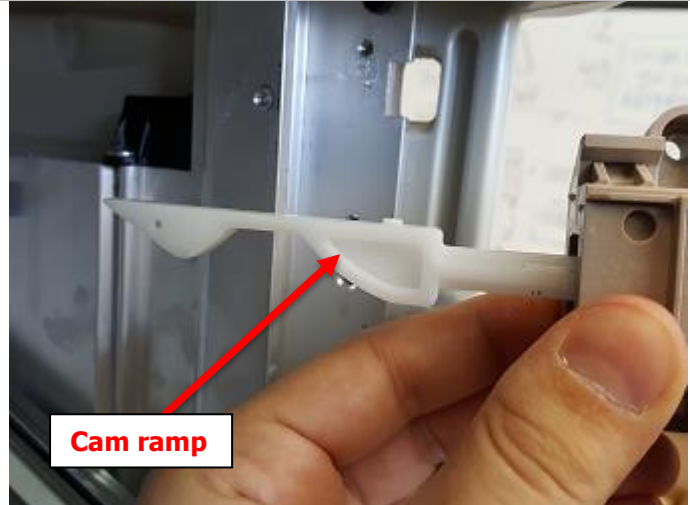


The Solenoid assembly will now release from the lock assembly when you pull it downwards.



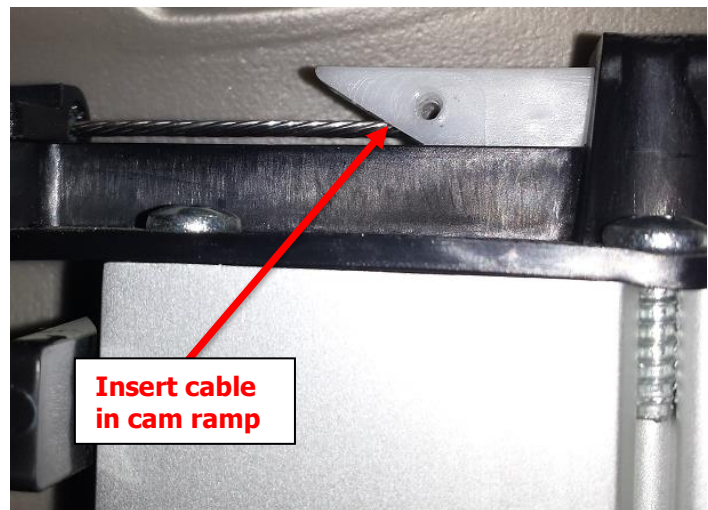
You can now reassemble the new lock and Solenoid assembly into the cart. Make sure that when the

lock assembly goes back into the cart that the cam ramp is oriented as shown in the picture to the right. You may have to wiggle it back and forth a little bit to reseat it back into the cart correctly.



For carts with 2 columns of drawers, make sure the cable assembly behind the cam ramp is fully inserted into the back of the cam ramp. This is easier if you put the lock assembly in the locked position and then insert the small screw.

Reassemble the rest of the cart in reverse order and test the cart. If needed, insert new batteries.



If you need any assistance during this process, please feel free to call Capsa Healthcare Customer Service at 800-437-6633.